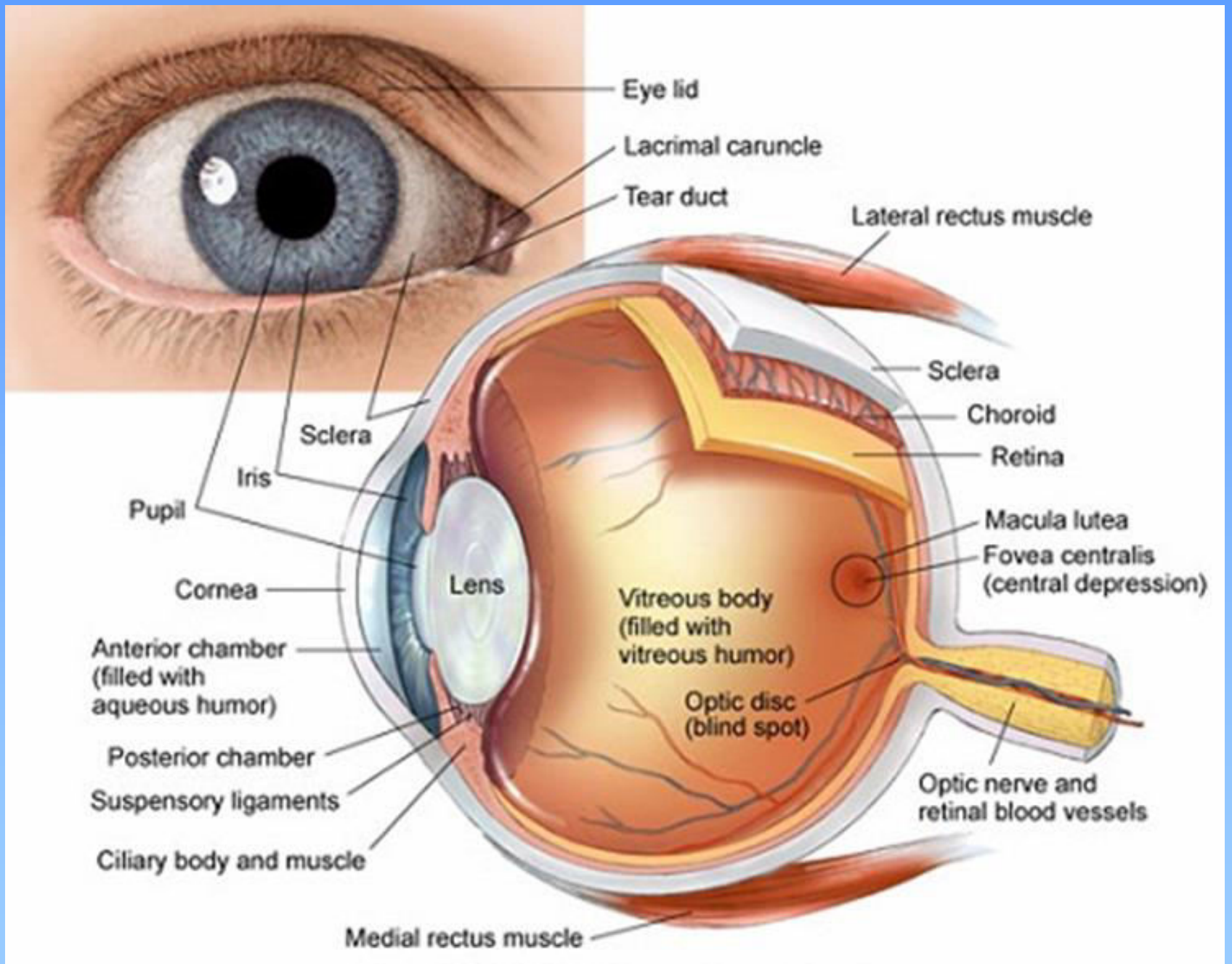
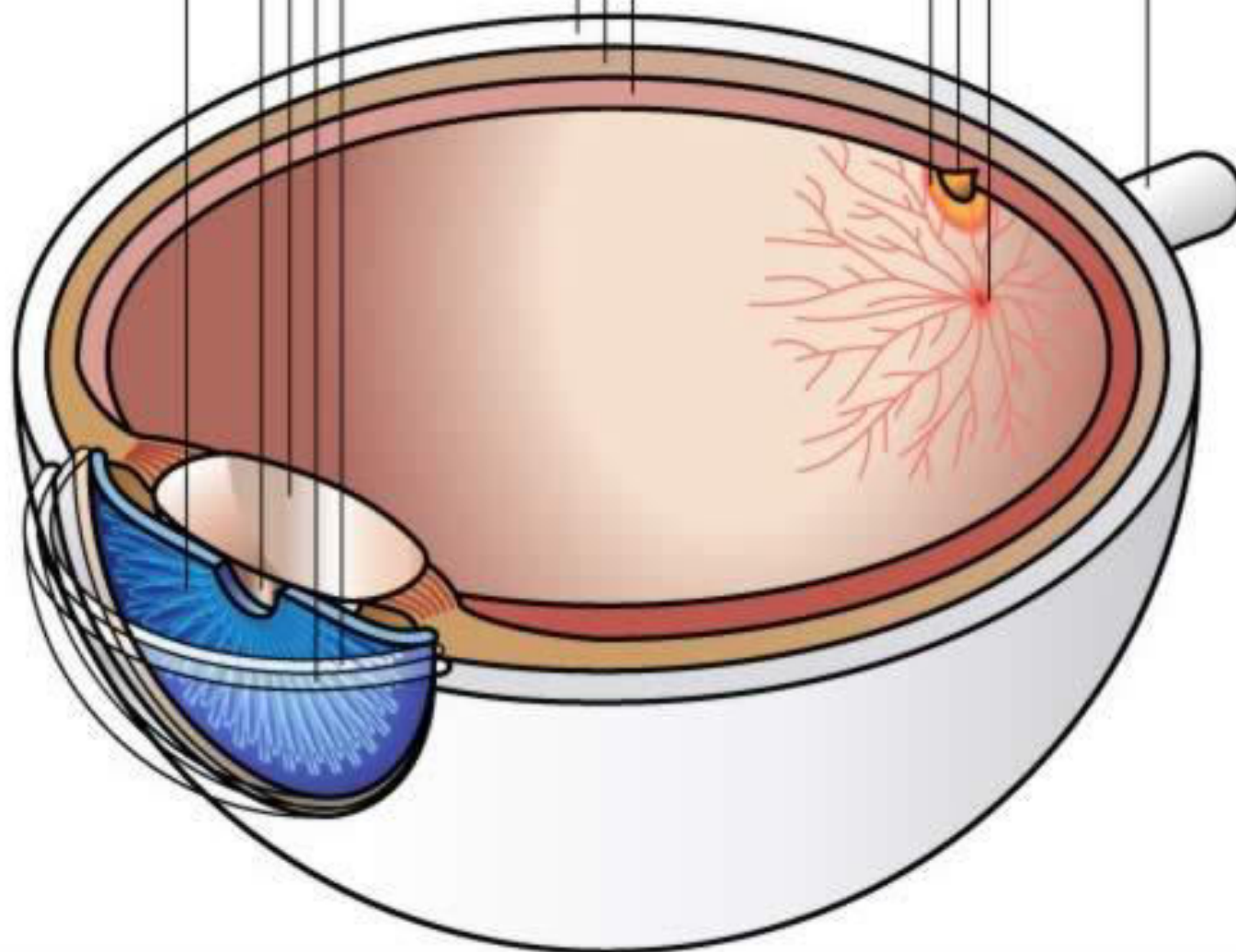
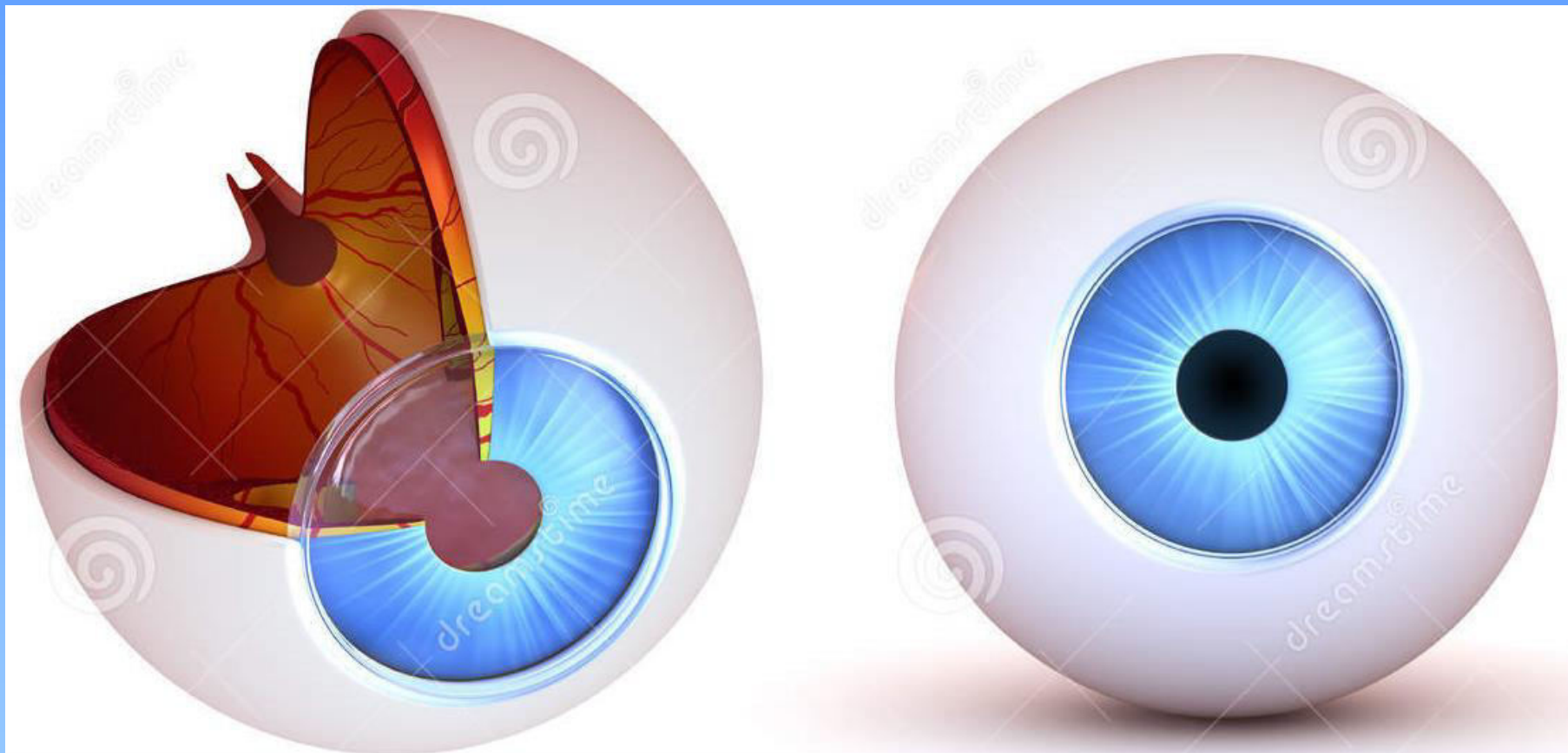


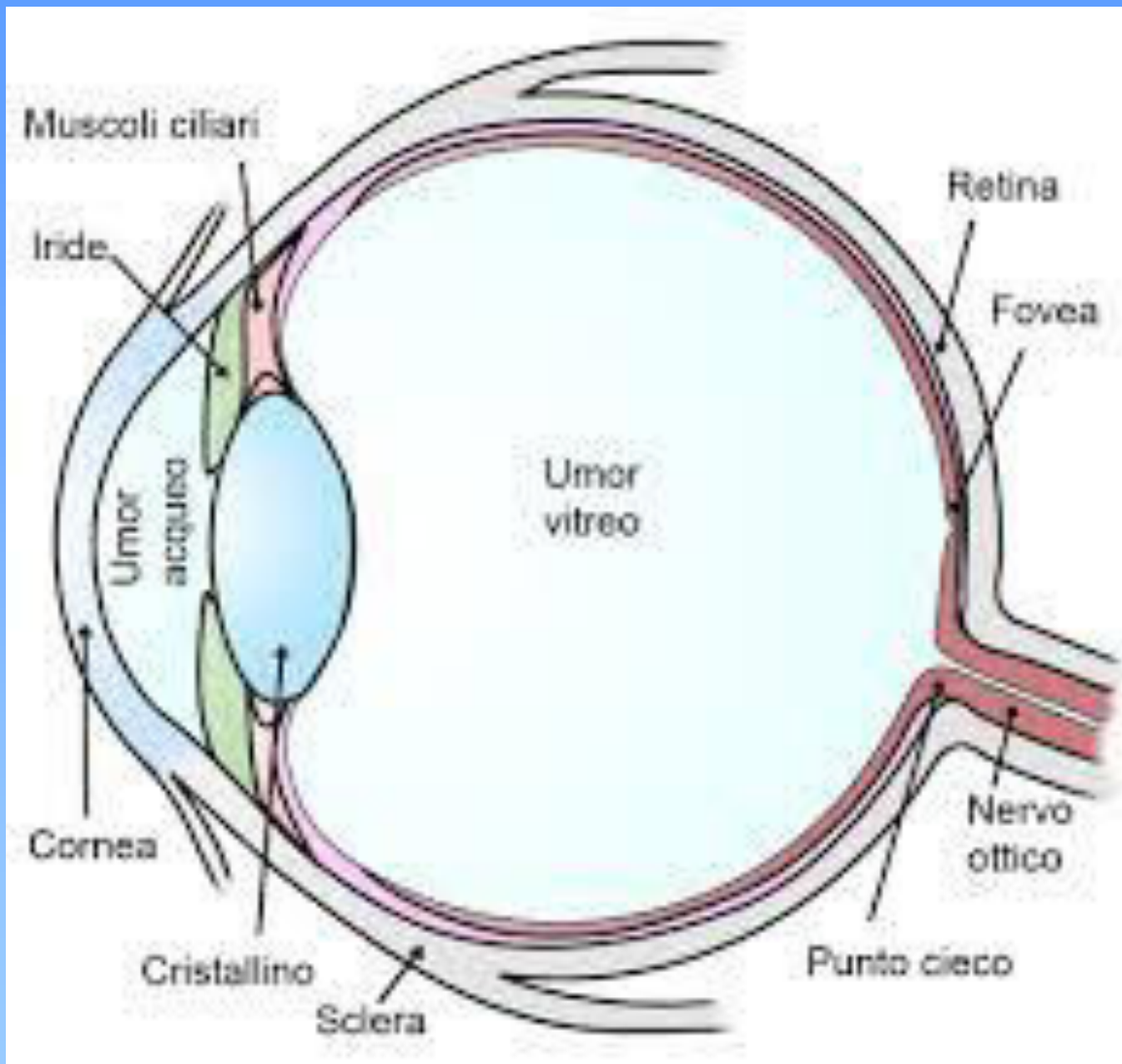
# Occhio e visione

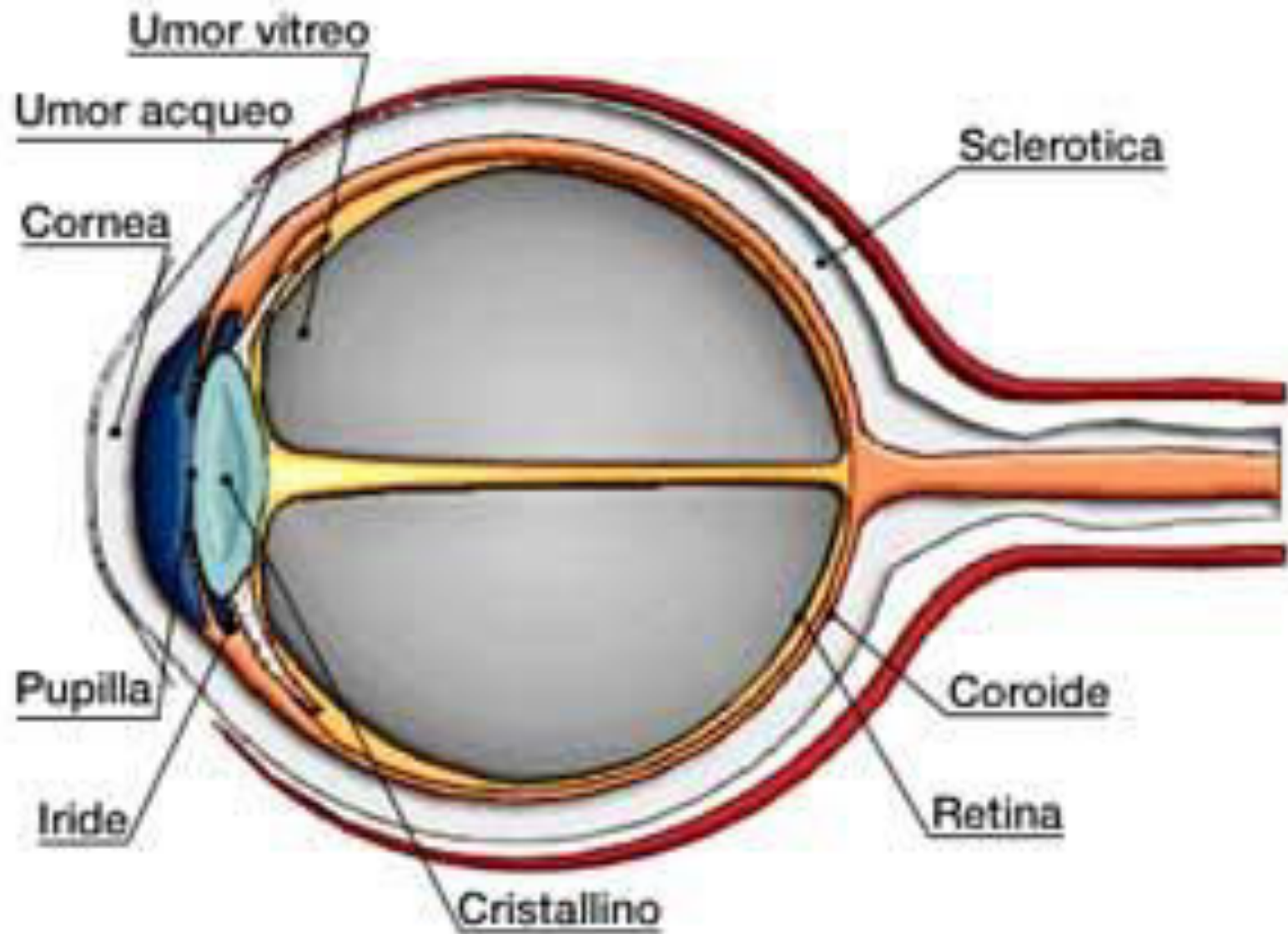


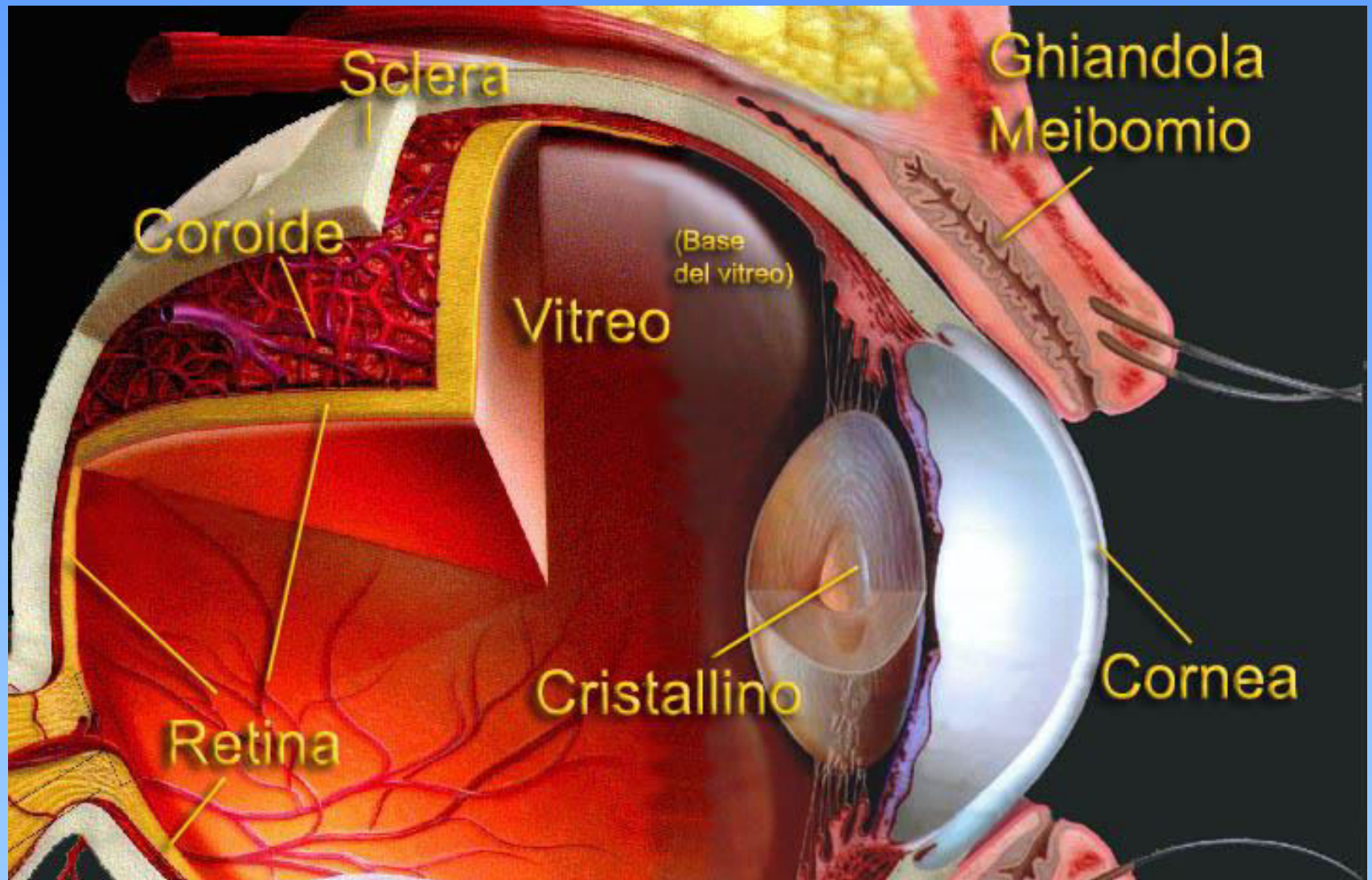
CRISTALLINO    EPITELIO    SCLERA    FOVEA    DISCO OTTICO  
PUPILLA    CORNEA    COROIDE    MACULA    NERVO OTTICO  
IRIDE    RETINA











Sclera

Cornea

Pupil

Iris

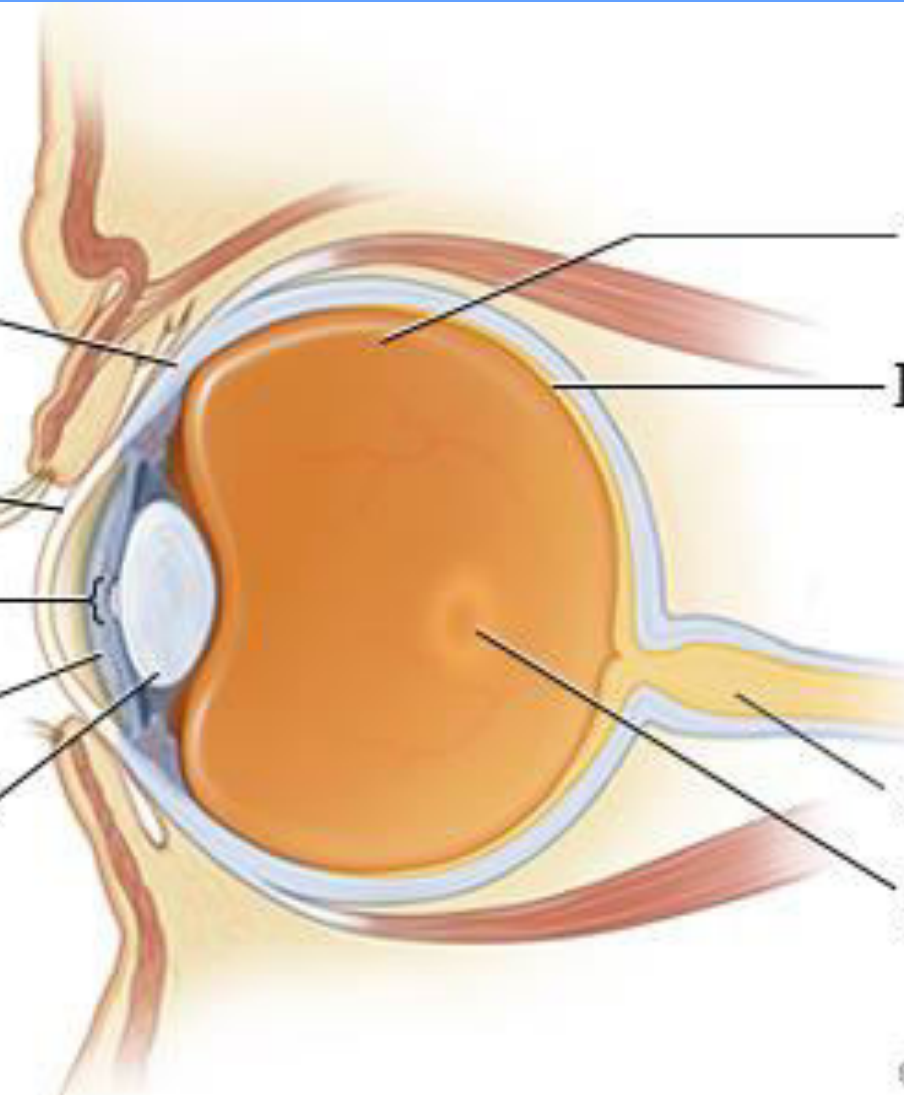
Lens

Vitreous gel

Retina

Optic nerve

Macula



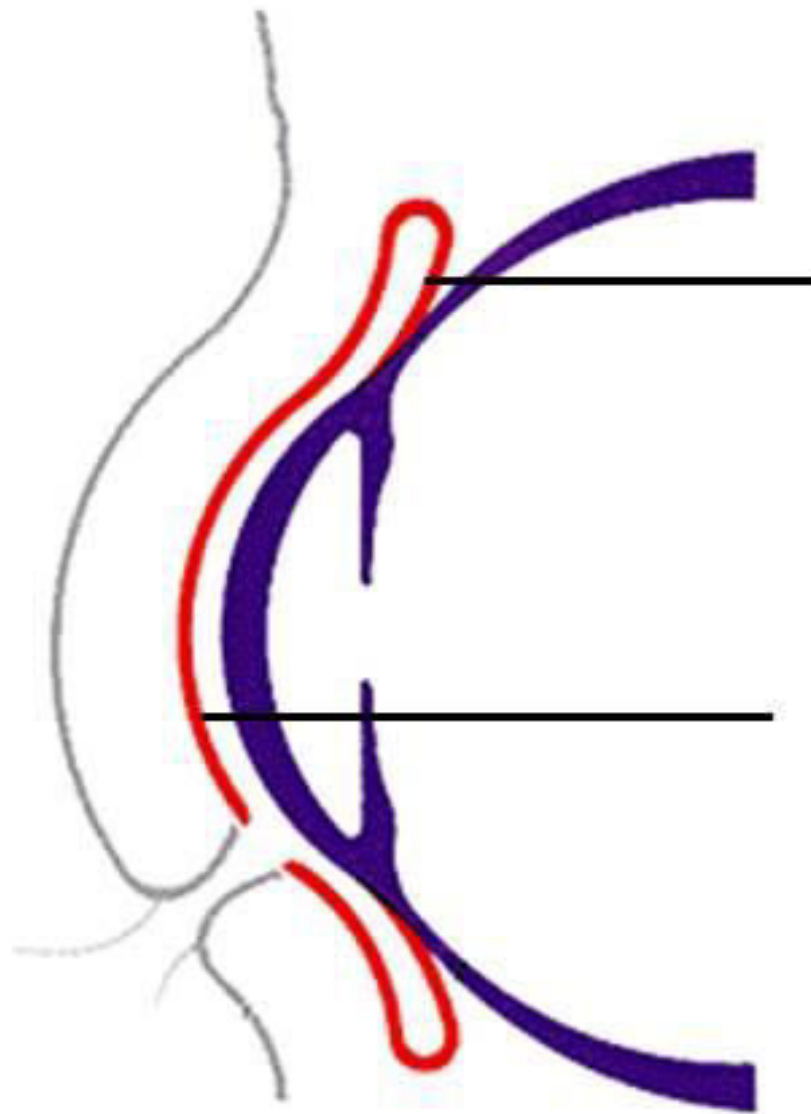


Iris

Pupil

Sclera

Conjunctiva  
(lines eyelids and  
surface of eye)



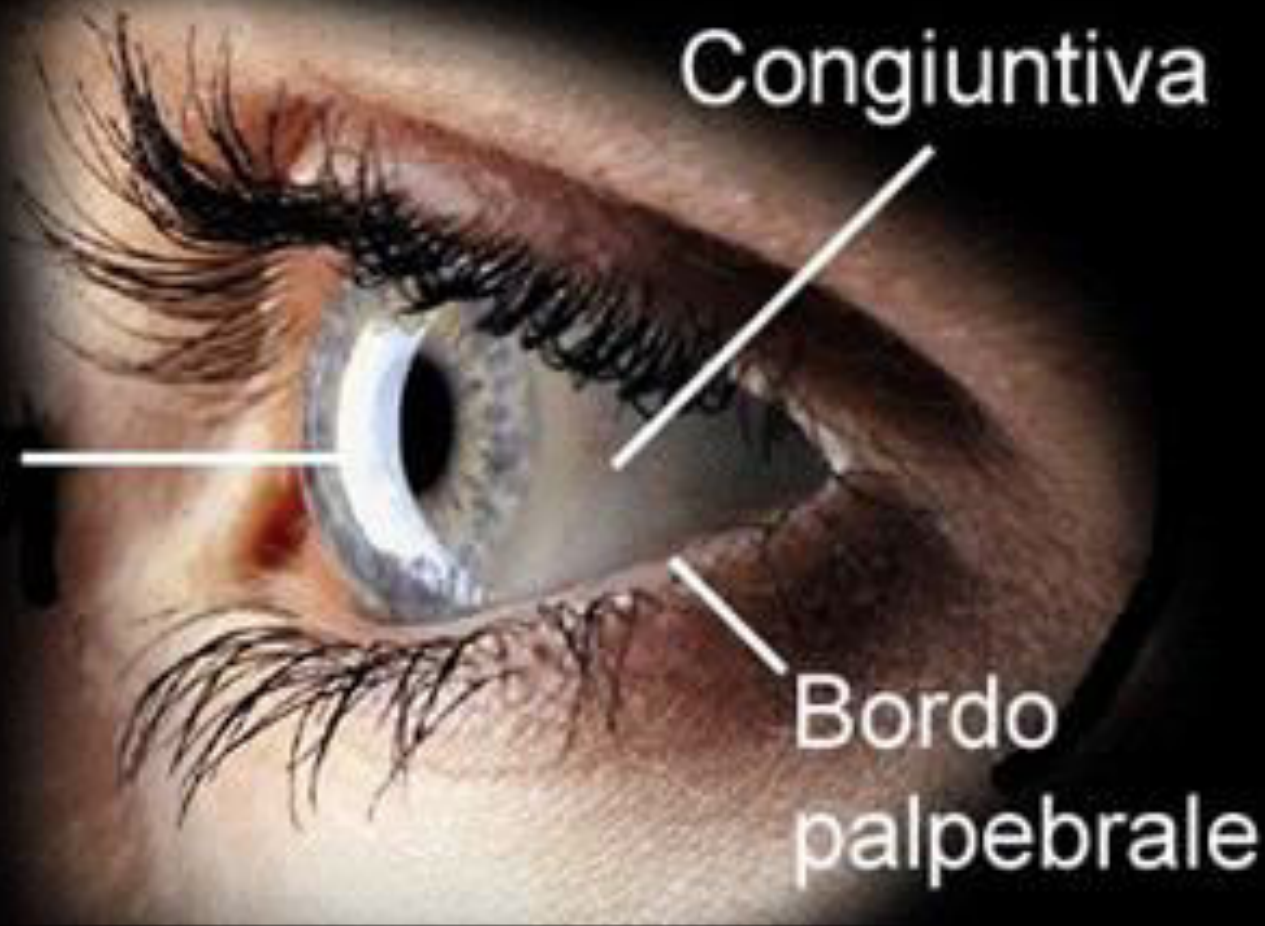
Congiuntiva  
bulbare

Congiuntiva  
palpebrale

Cornea

Congiuntiva

Bordo  
palpebrale



Lente I

Diaframma

Lente II

Pellicola

Macchina fotografica



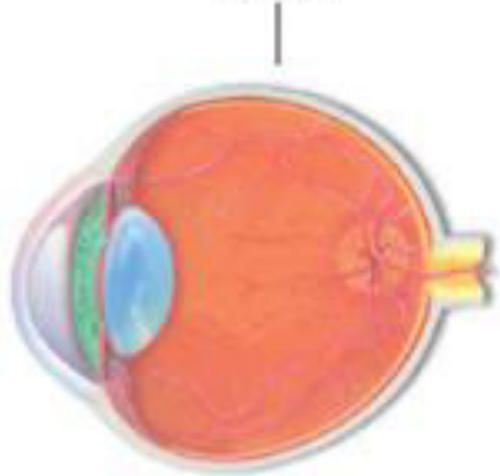
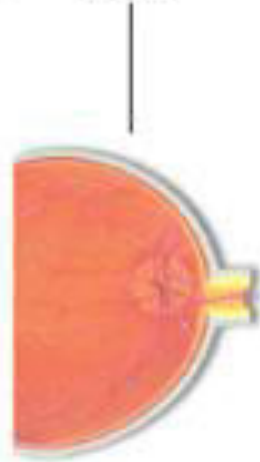
Cornea

Iride

Cristallino

Retina

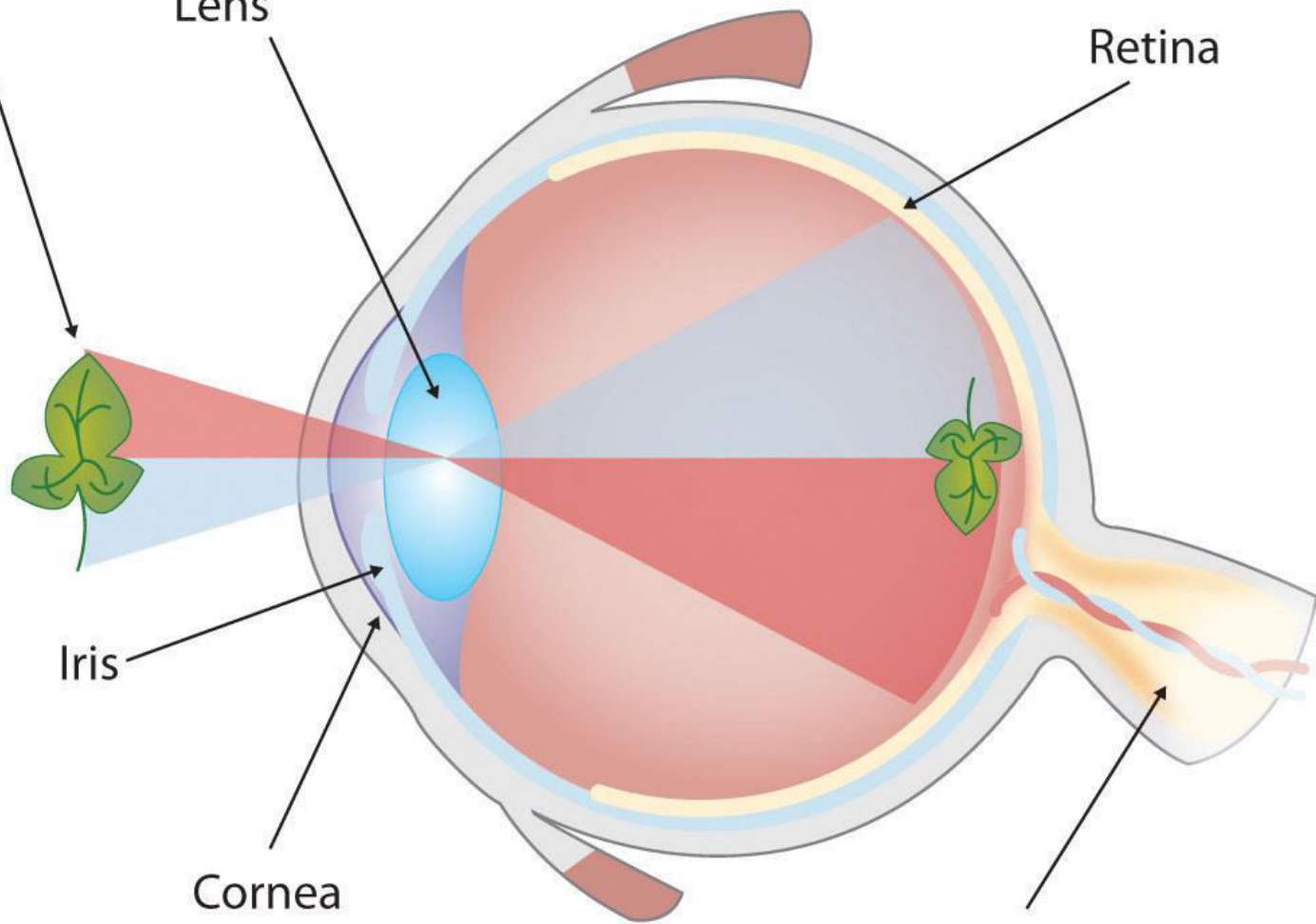
Occhio



Object

Lens

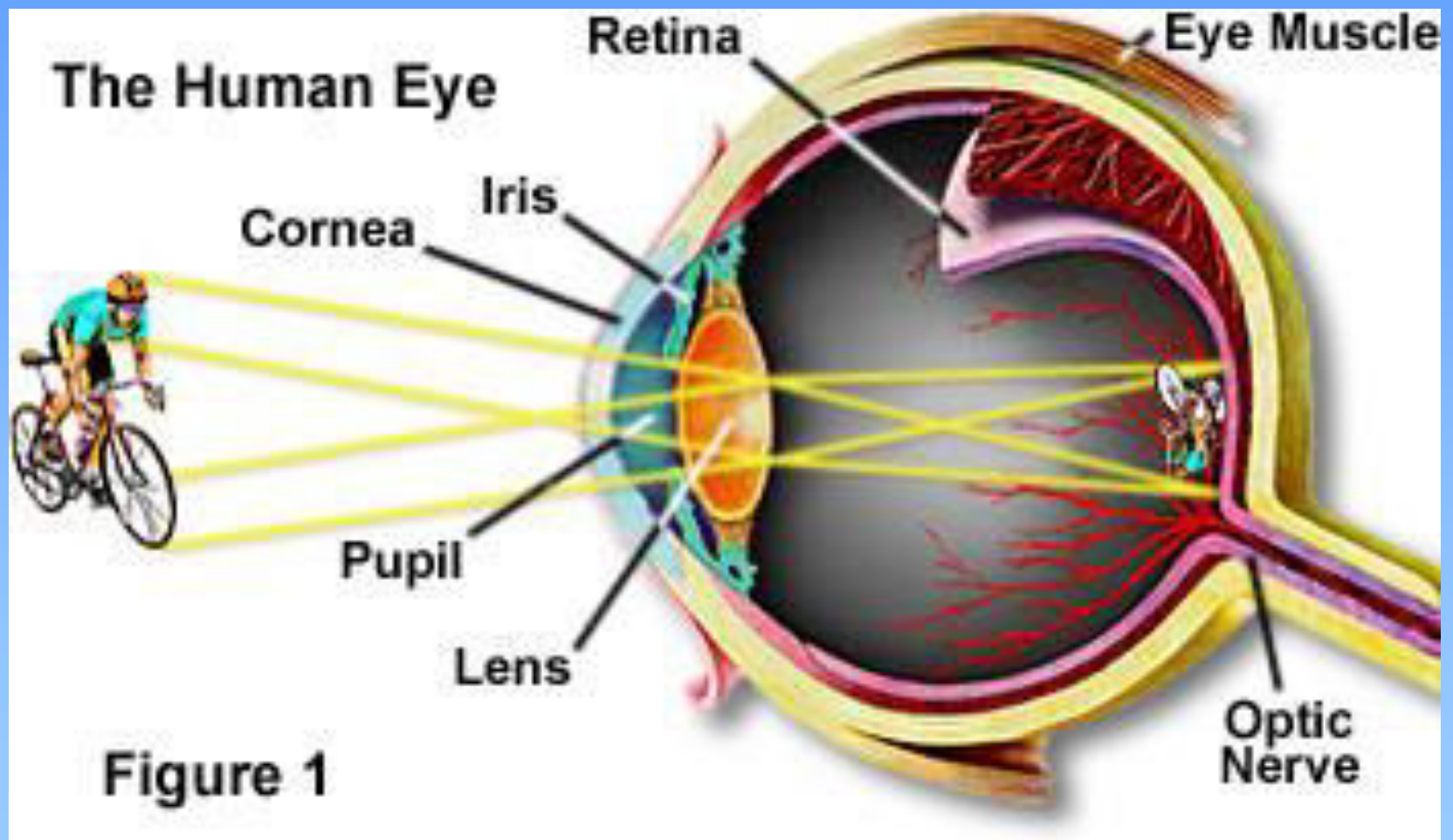
Retina

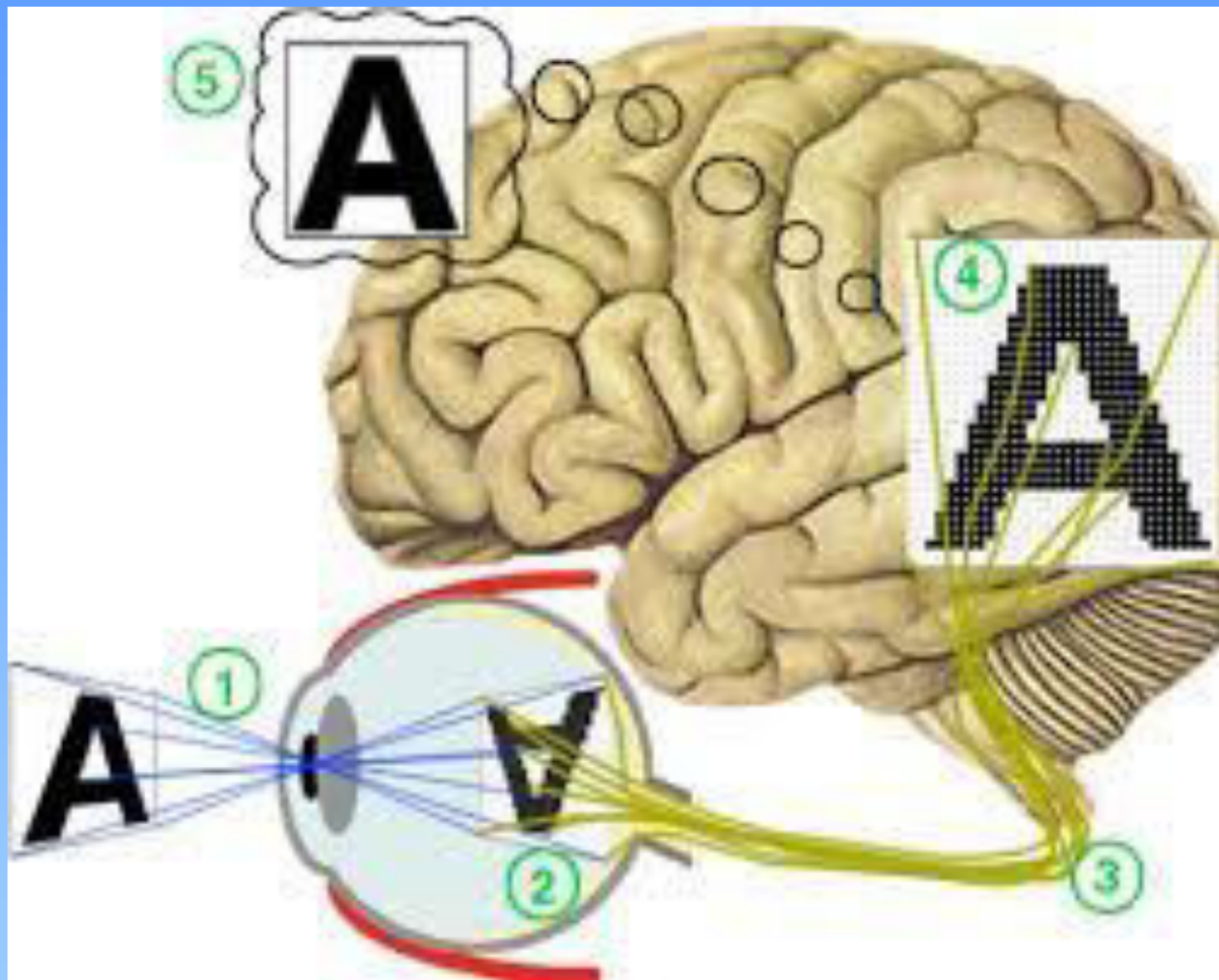


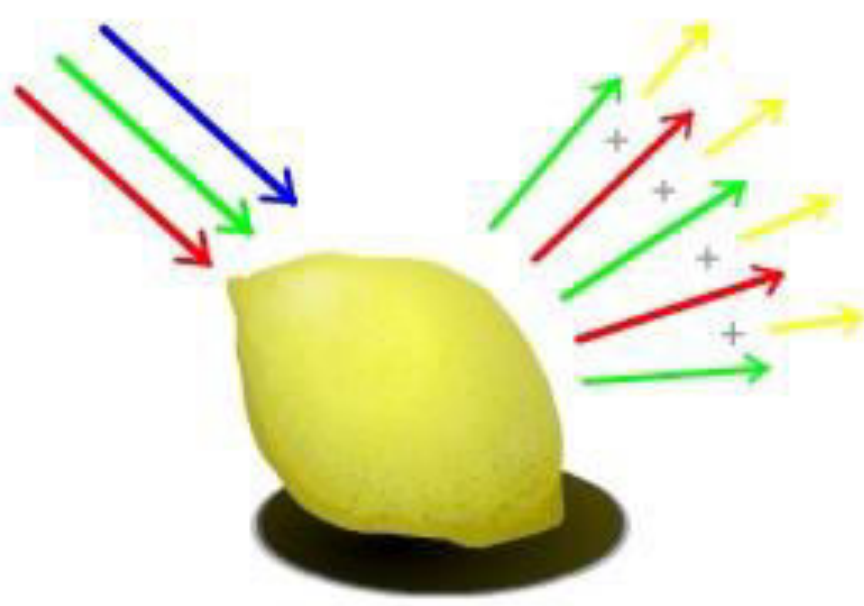
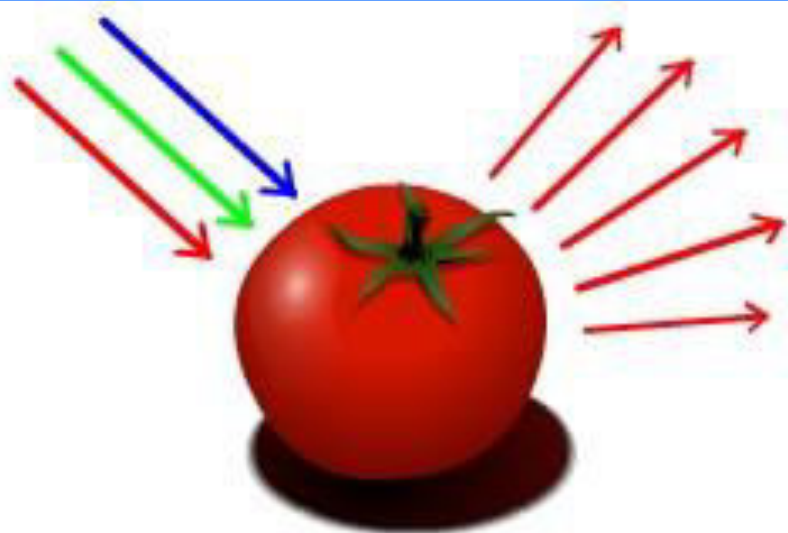
Iris

Cornea

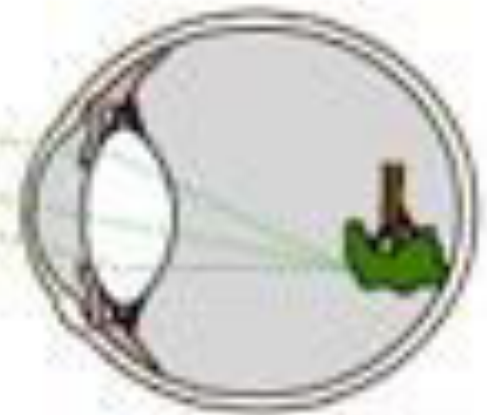
Optic nerve











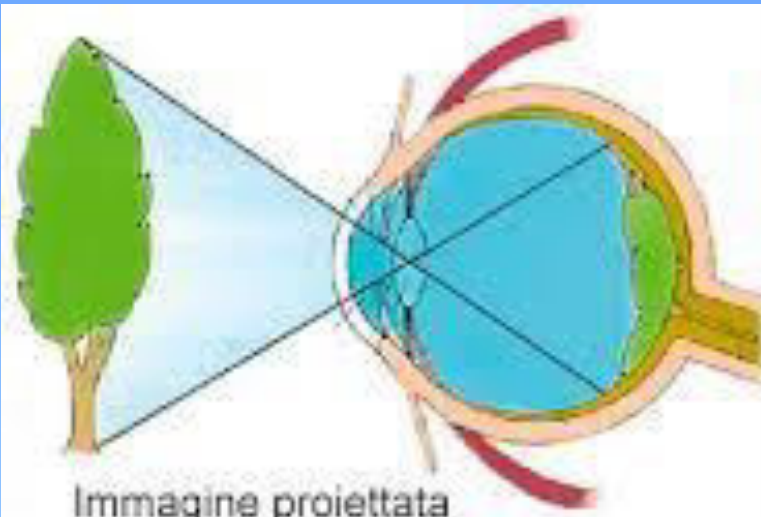


Immagine proiettata  
sulla retina

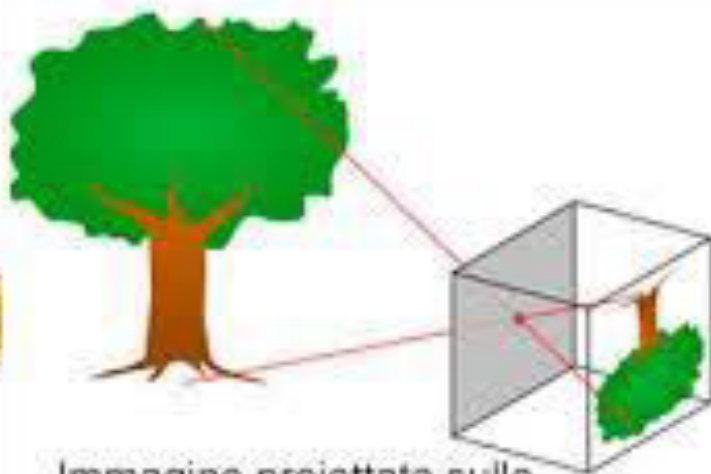
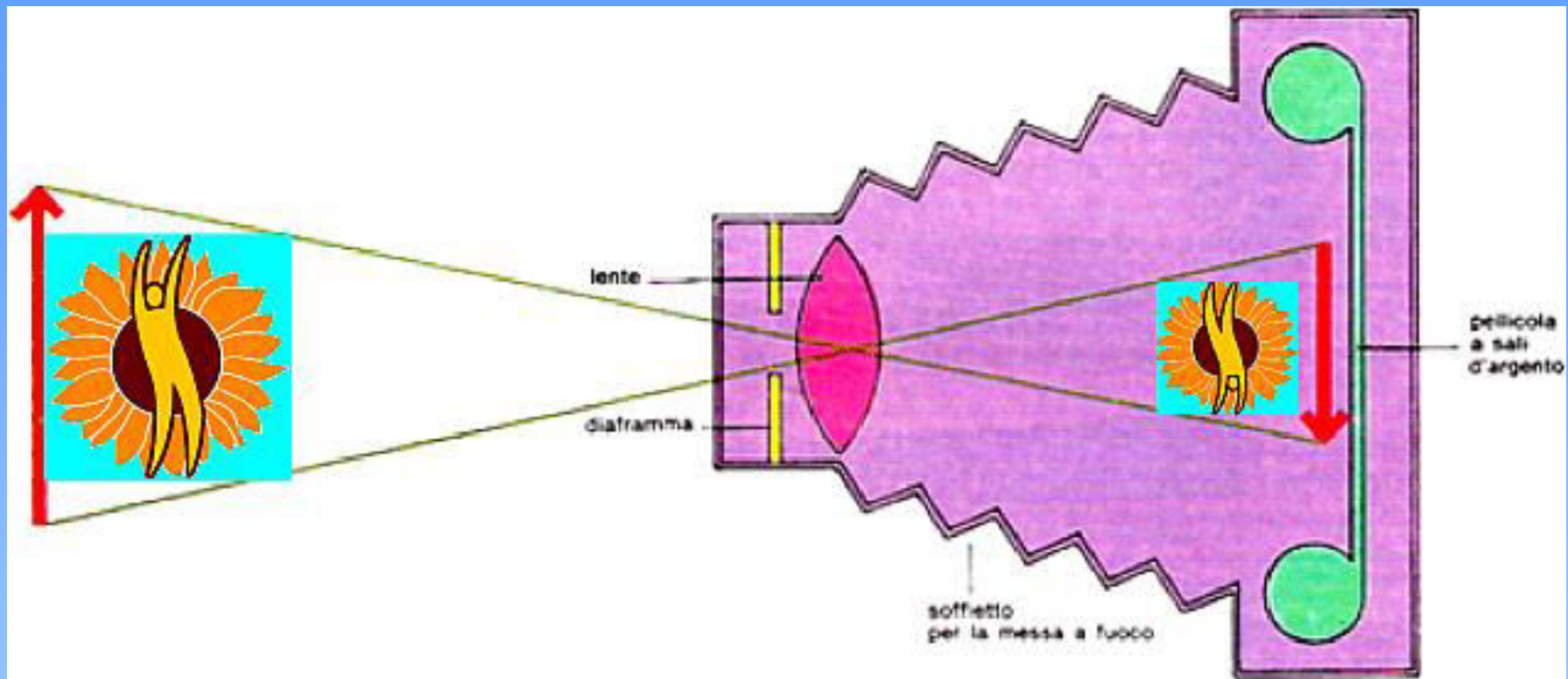
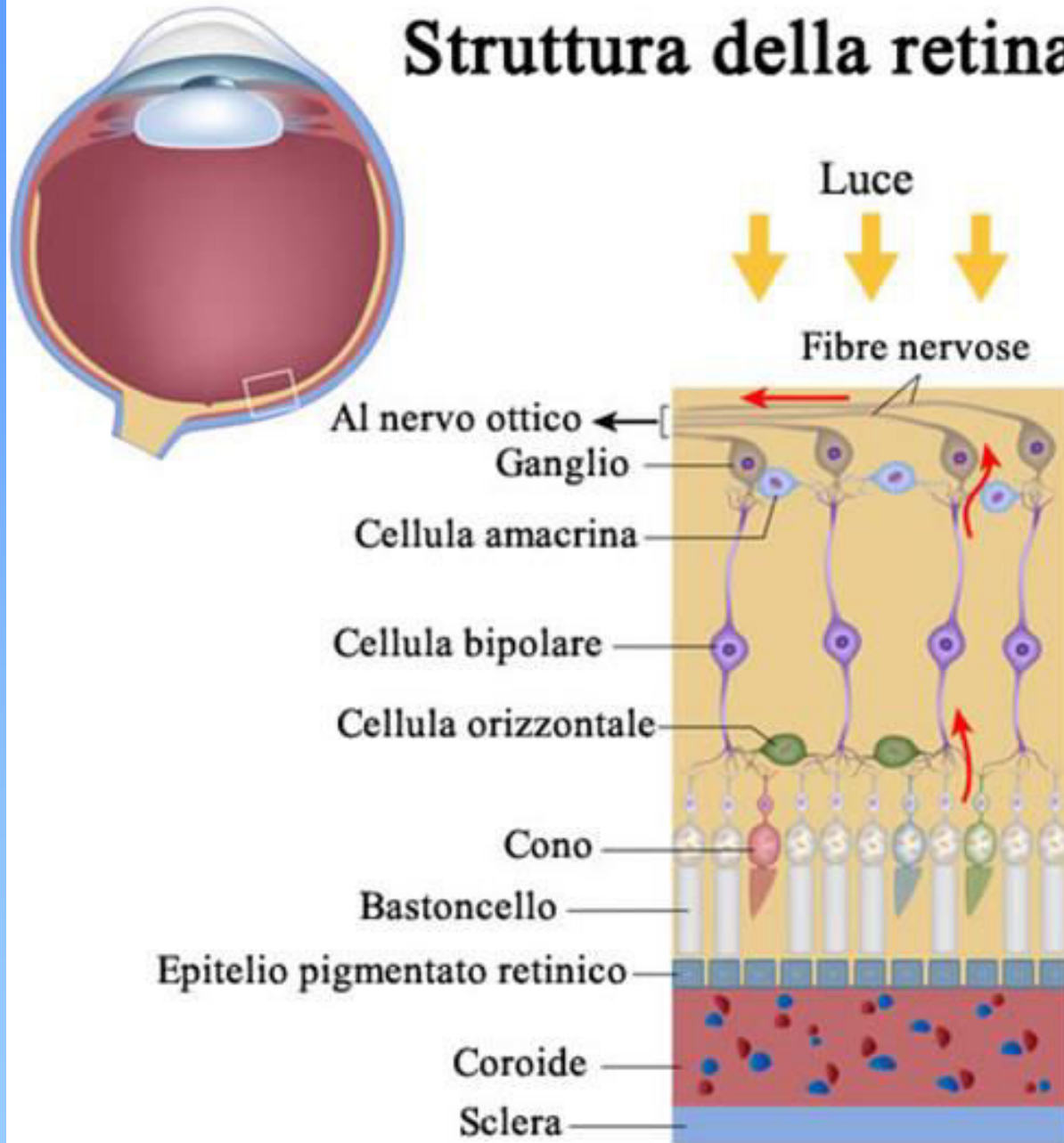
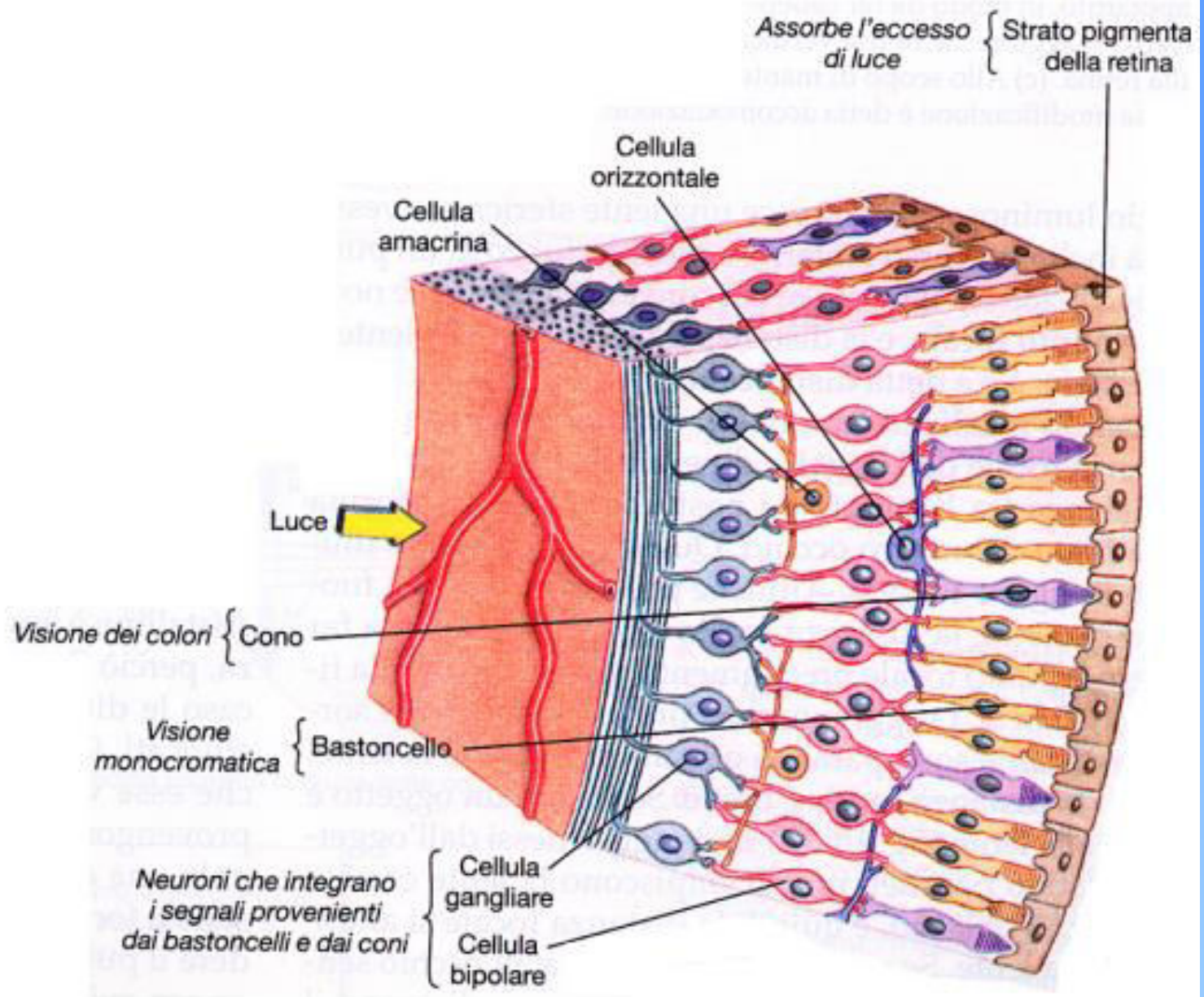


Immagine proiettata sulla  
parete della camera oscura



# Struttura della retina





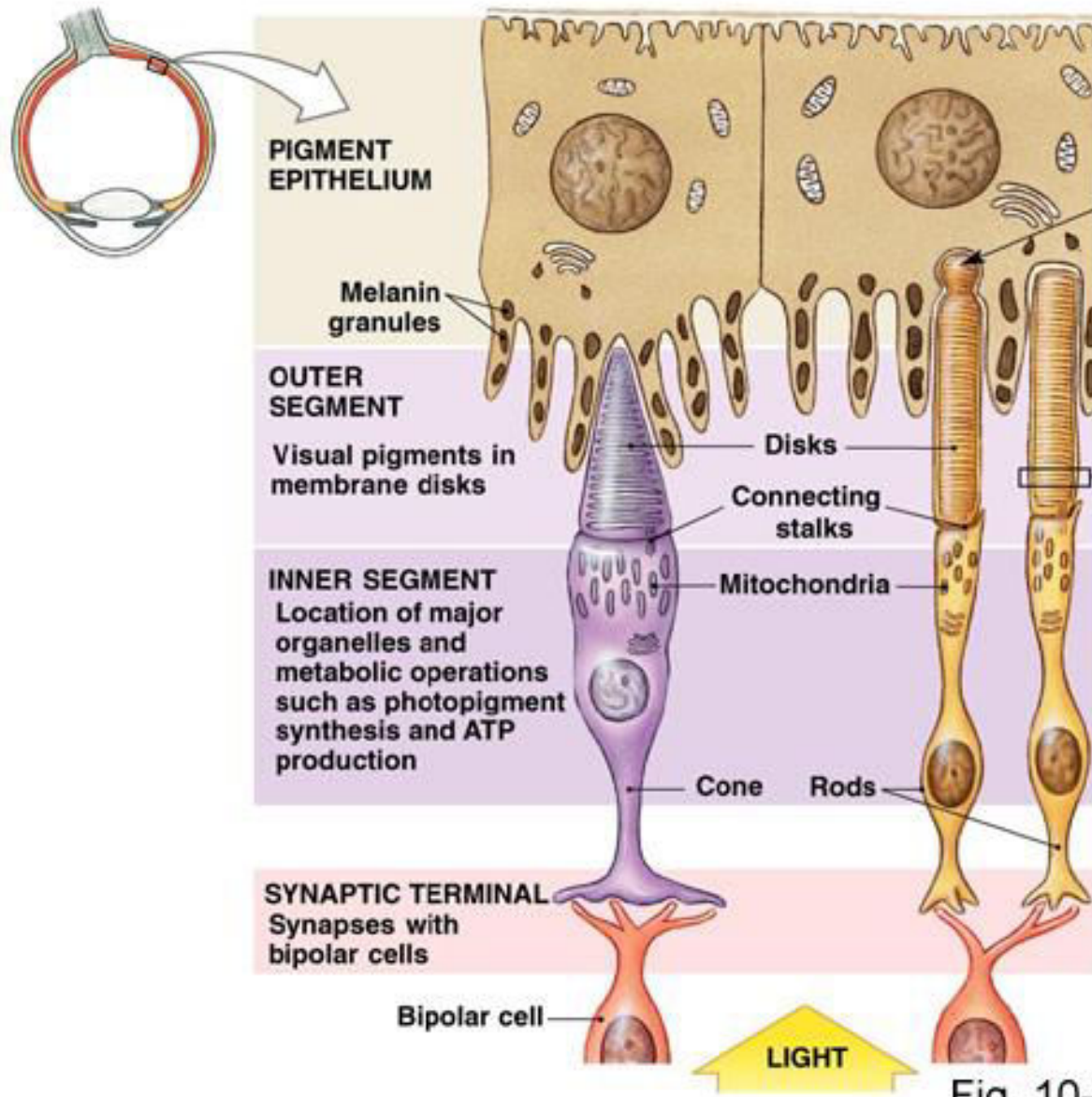
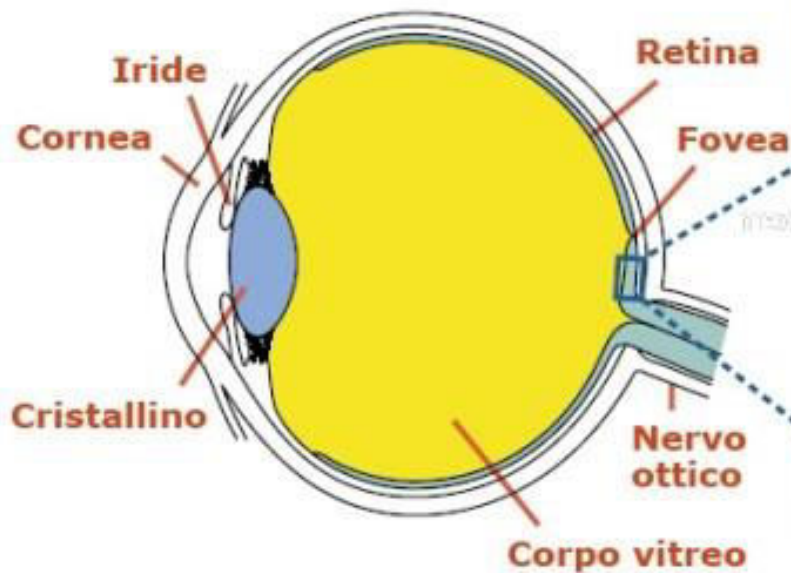


Fig. 10-37

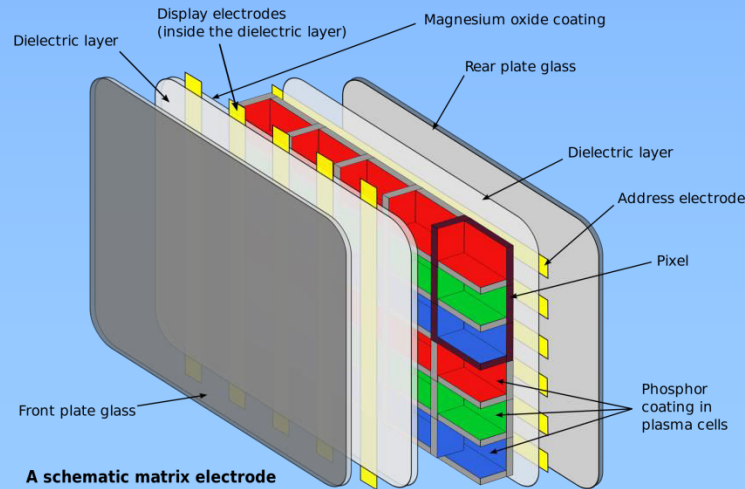
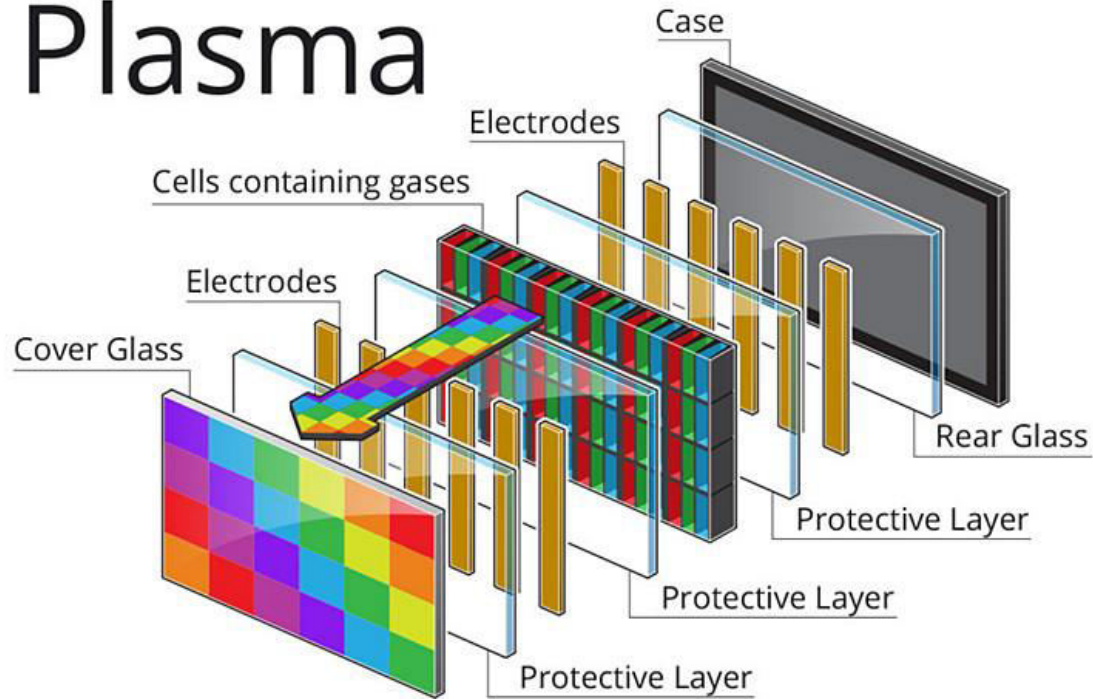
## Occhio umano, schema semplificato



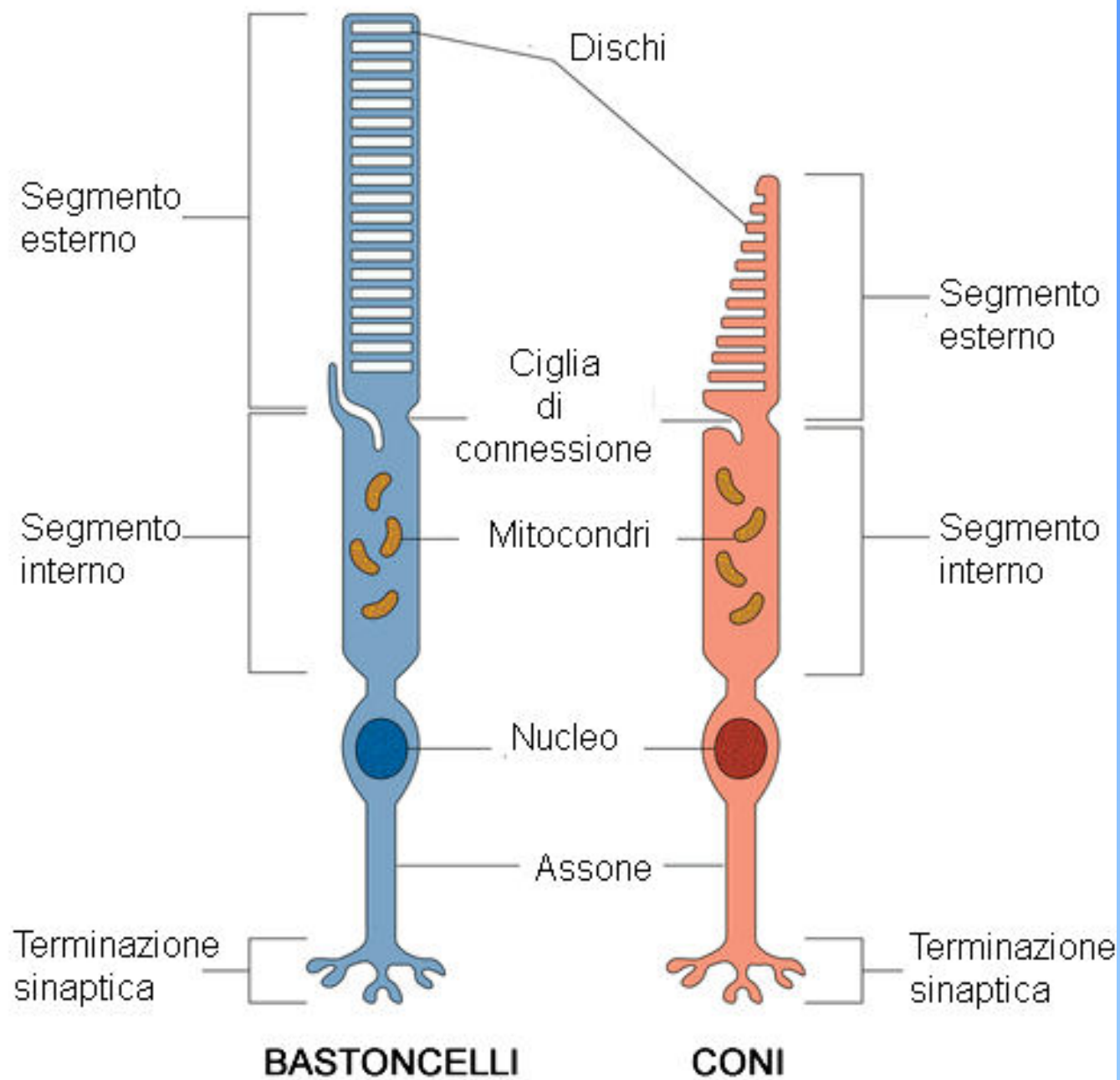
## Fotorecettori, tipo e forma

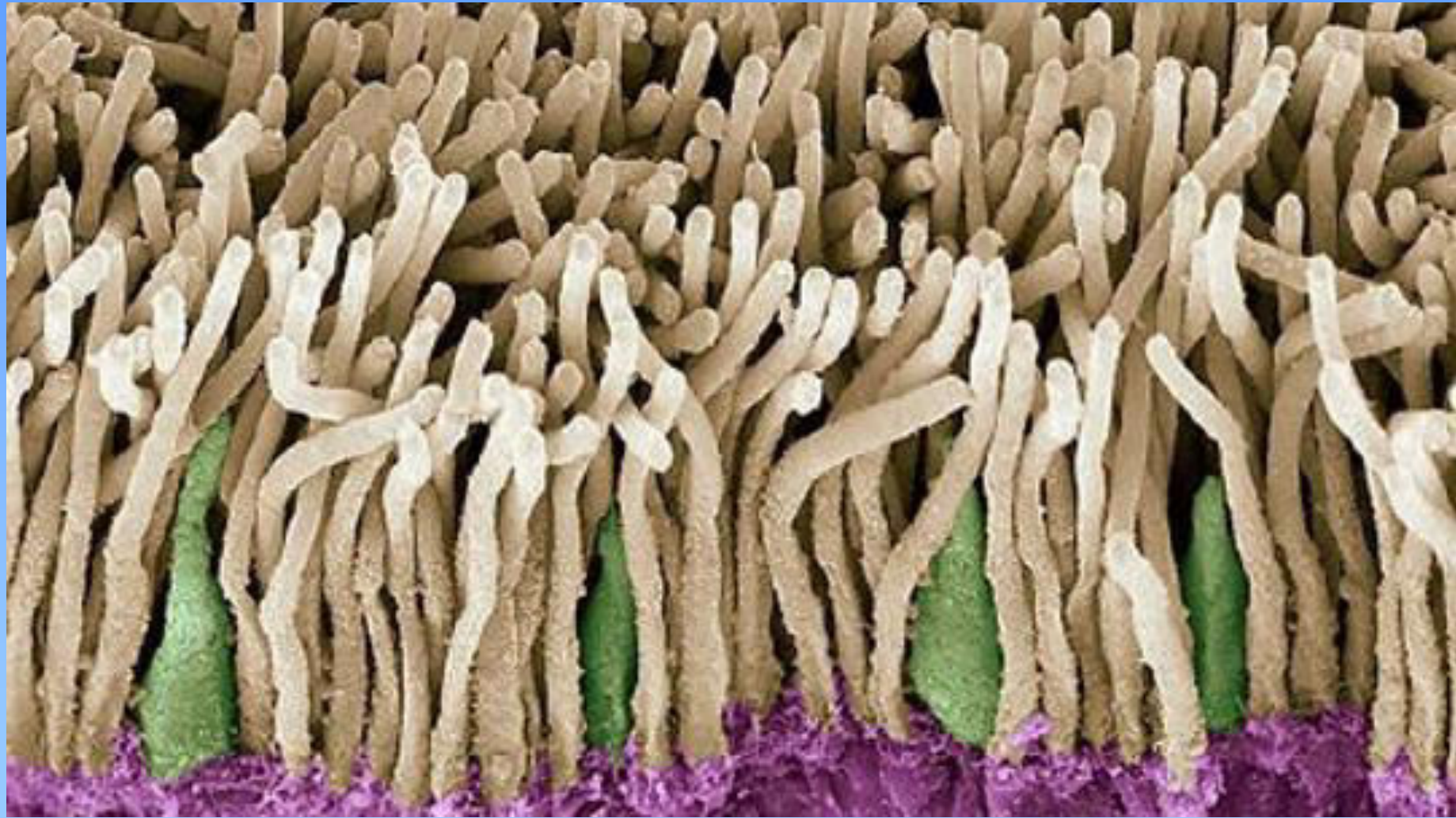


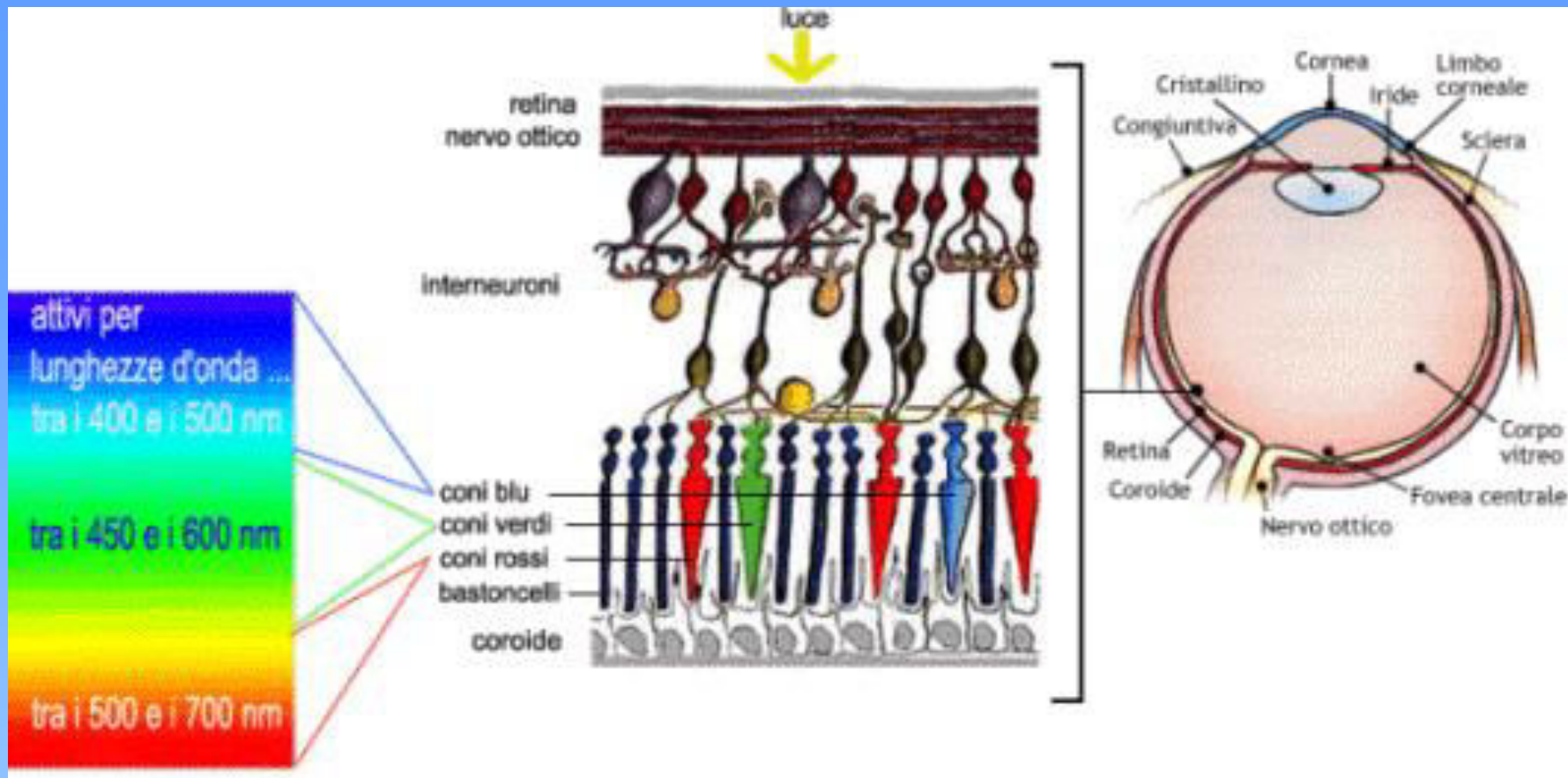
# Plasma

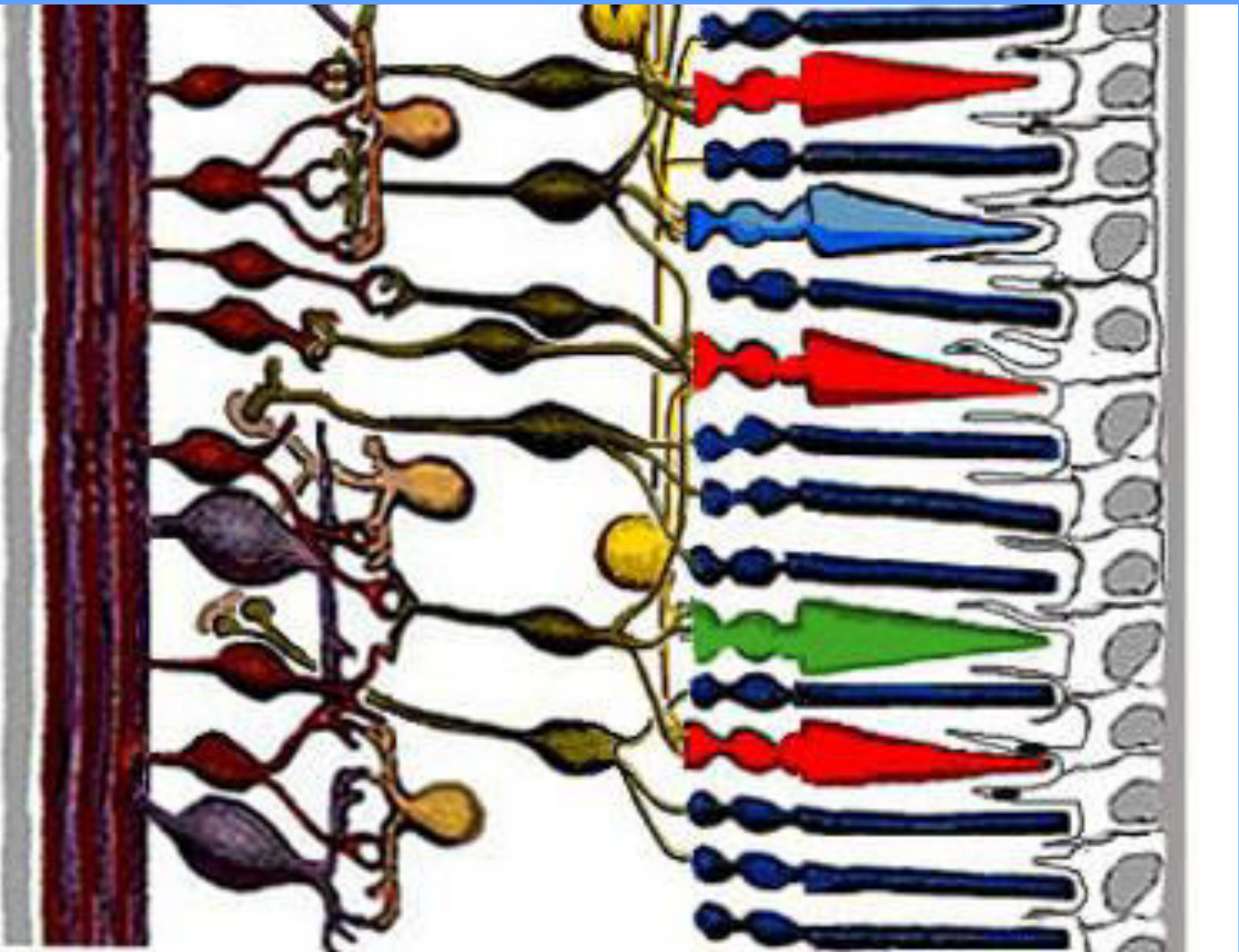




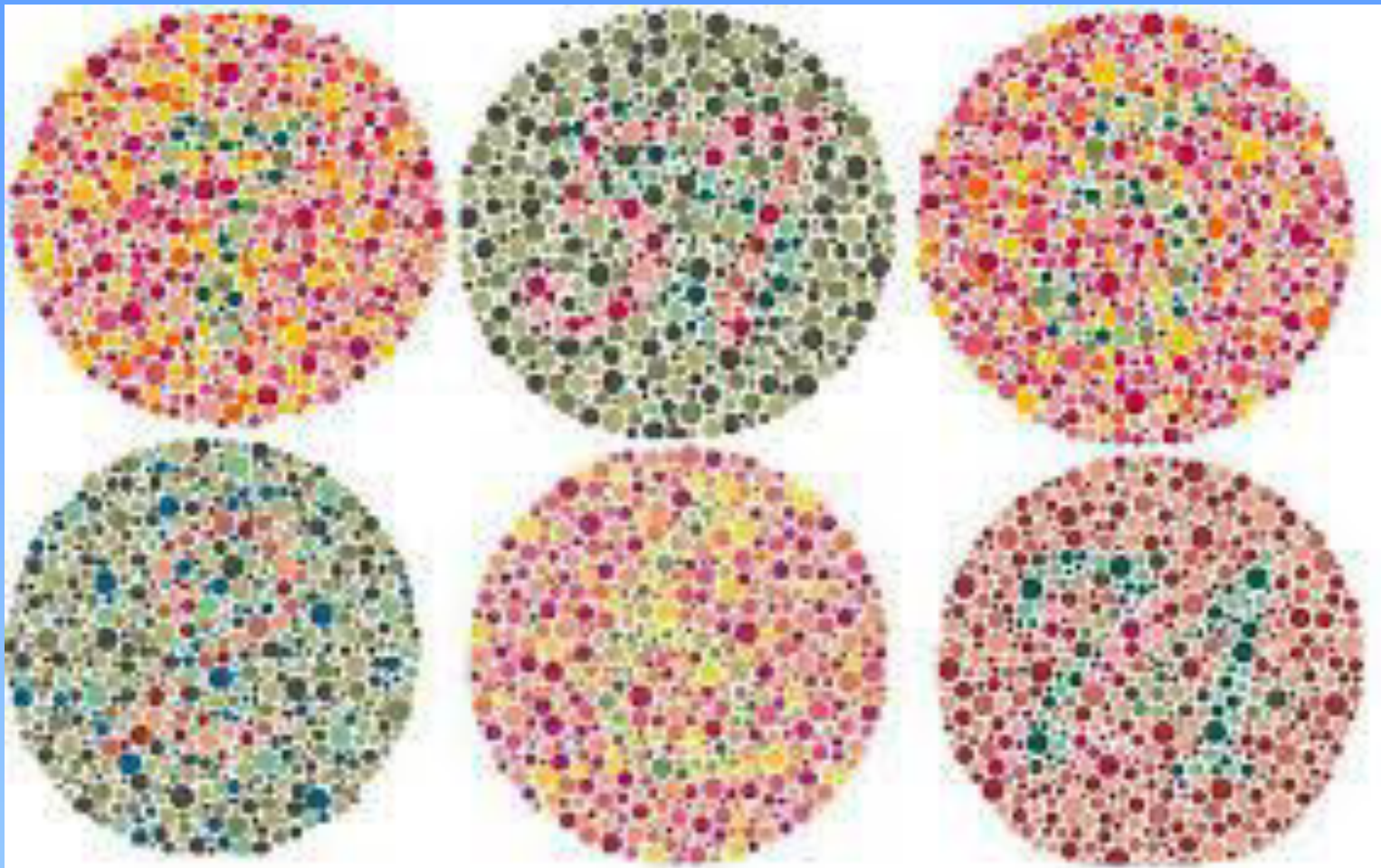


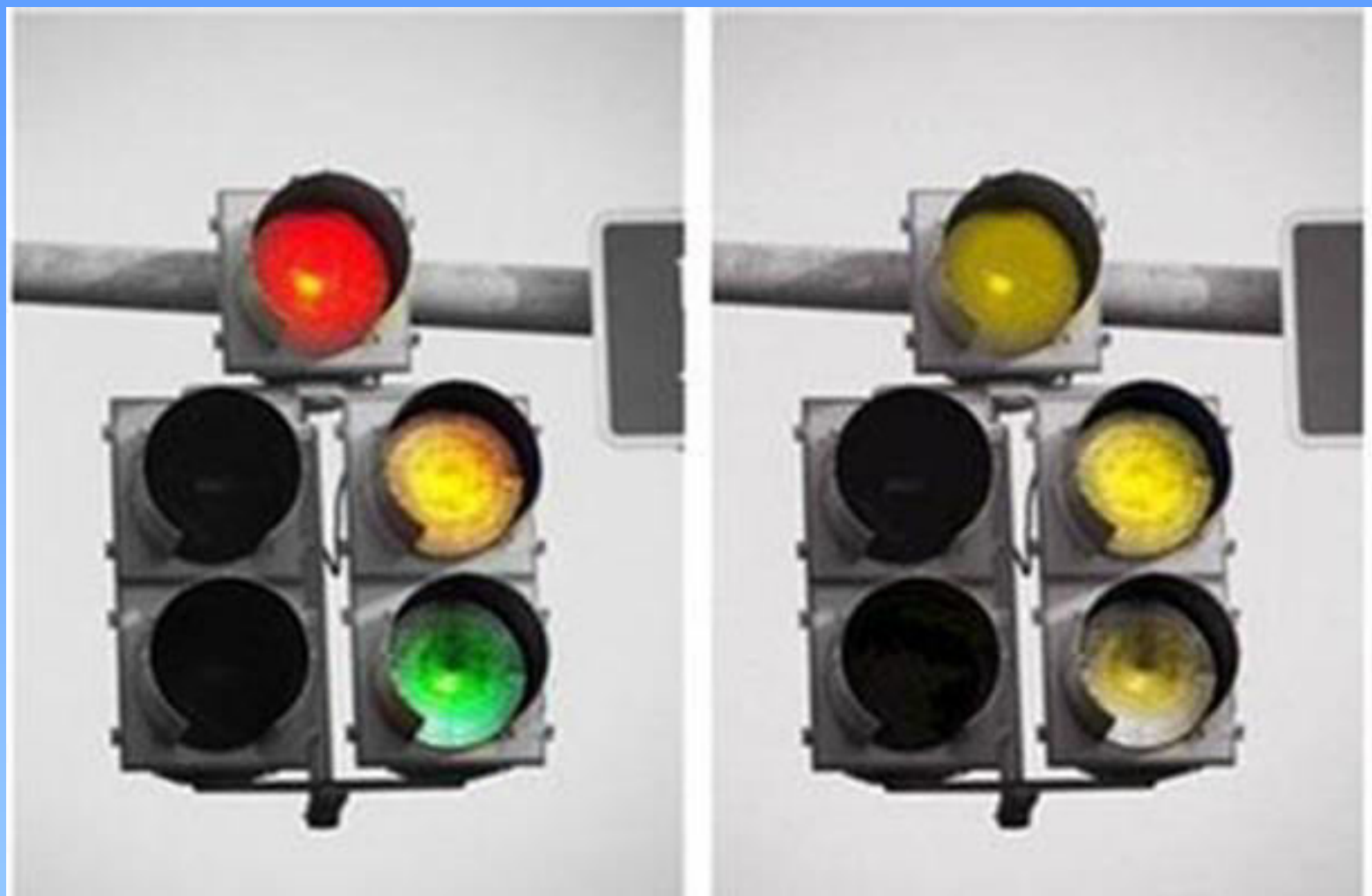




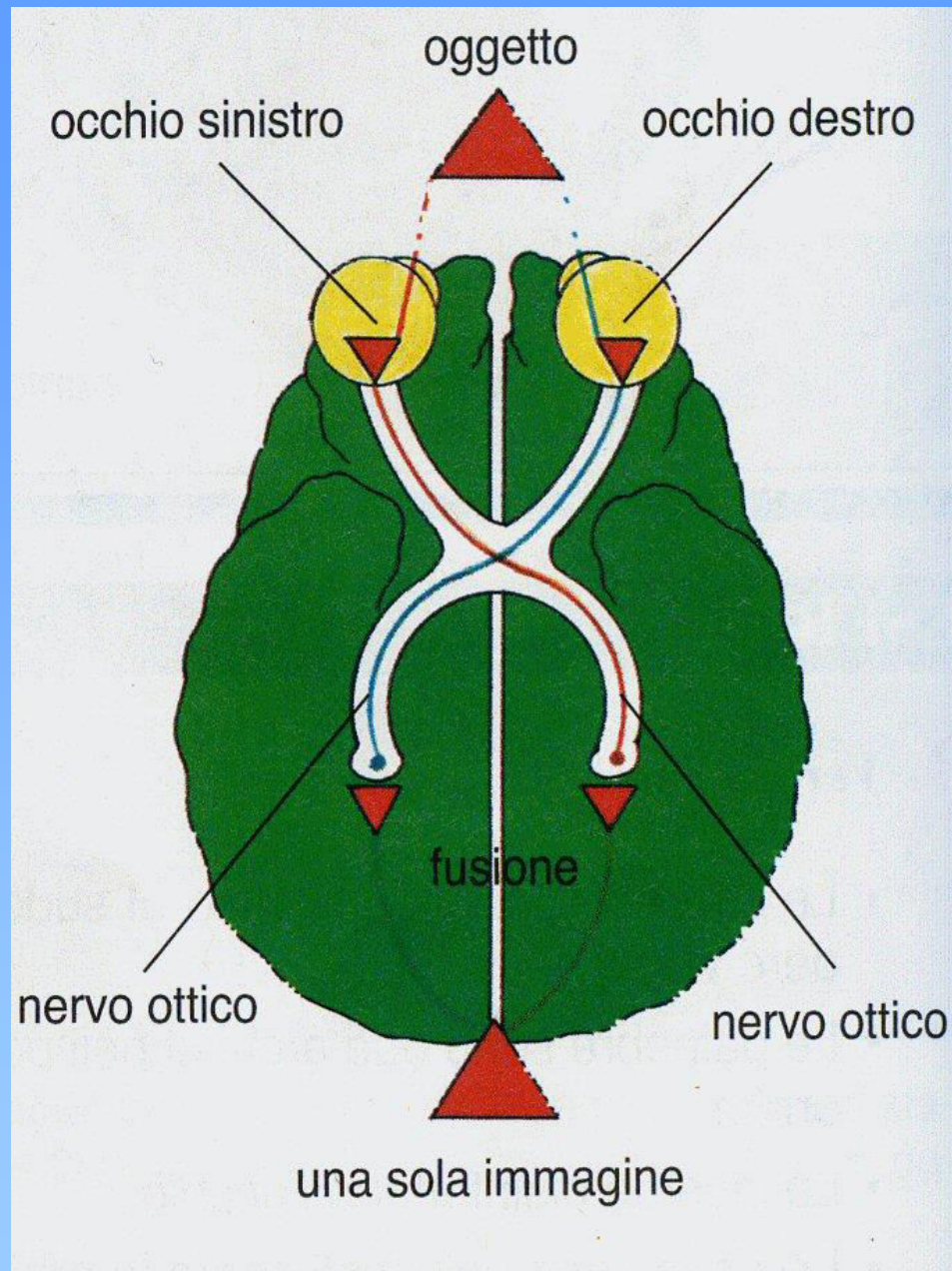


↑ א ש כ ל ↑

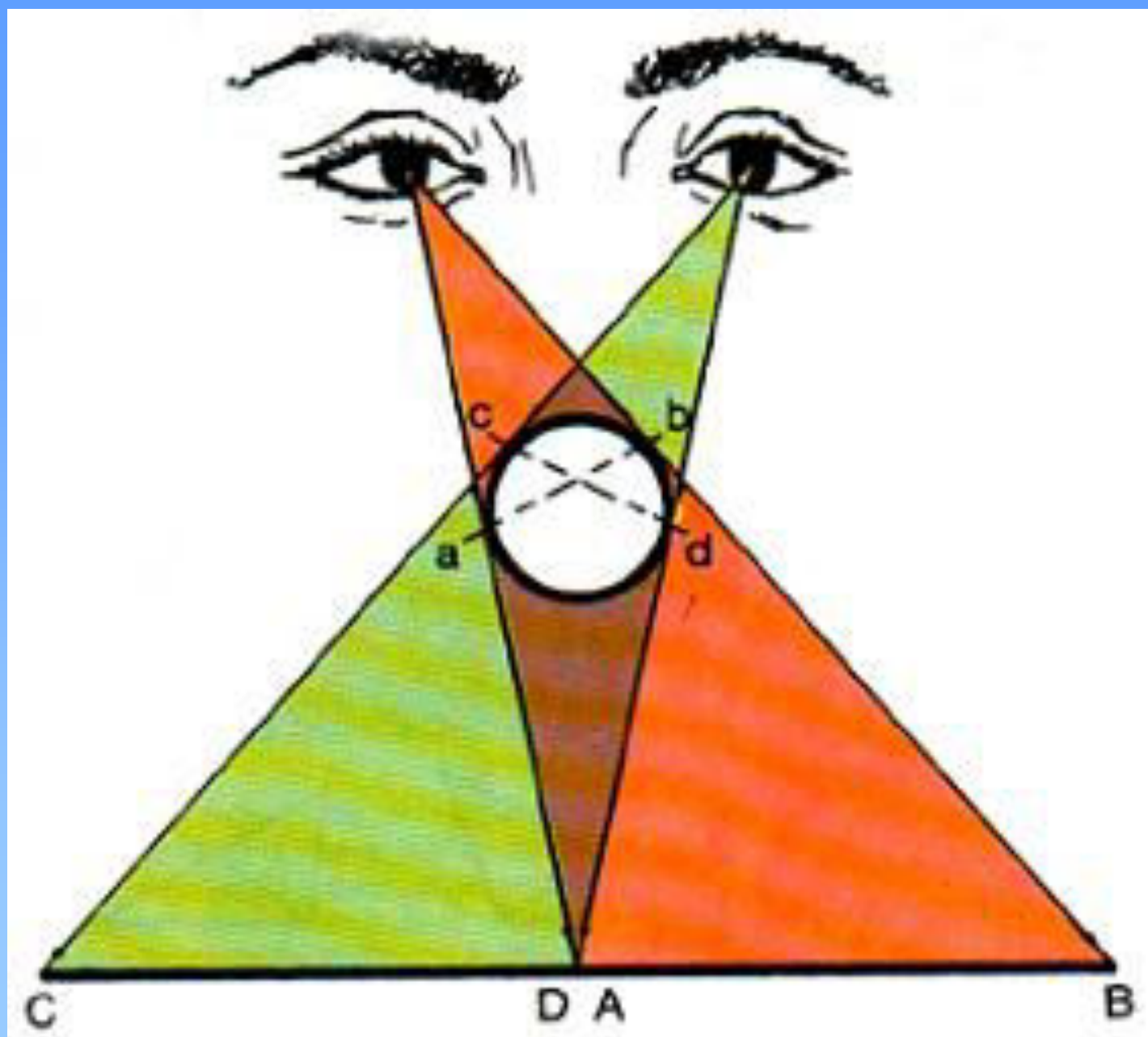












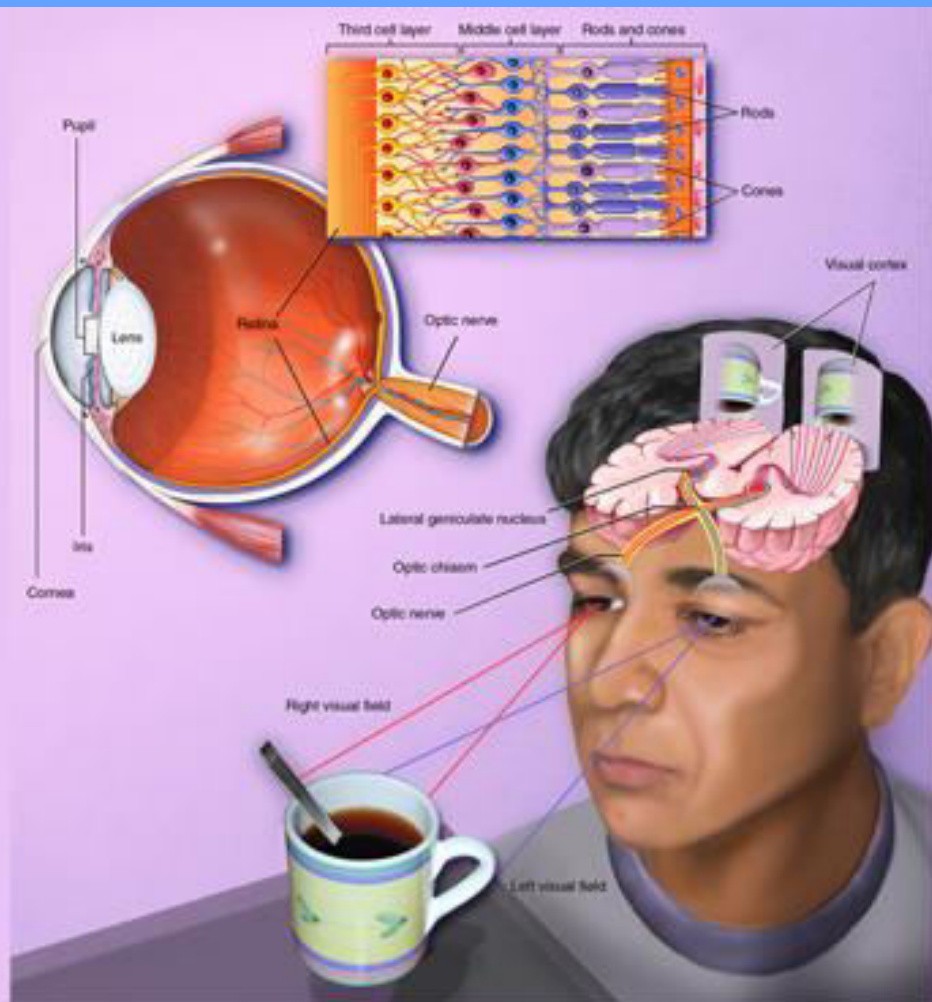


left eye image

right eye image

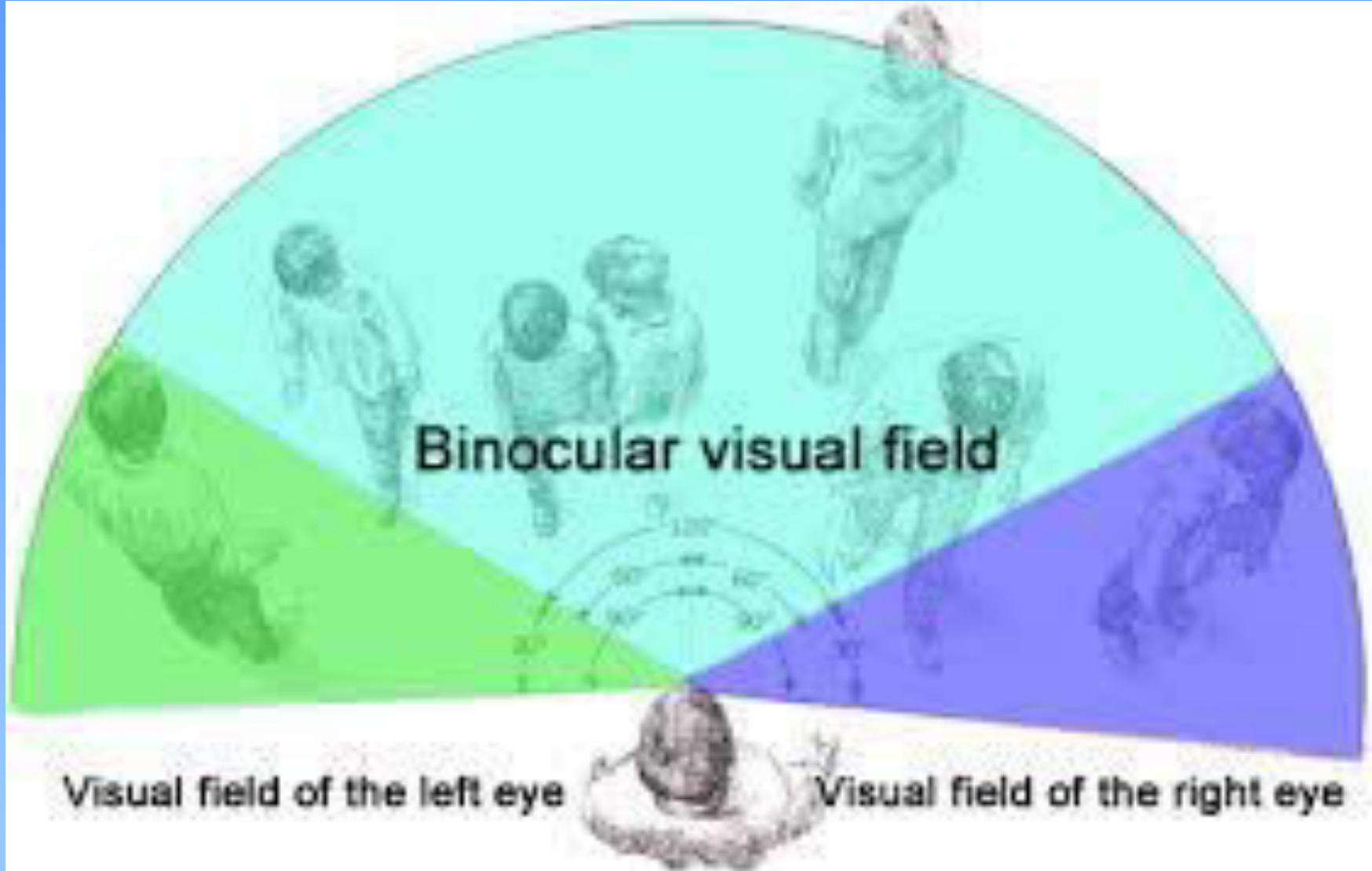


stereoscopic projection









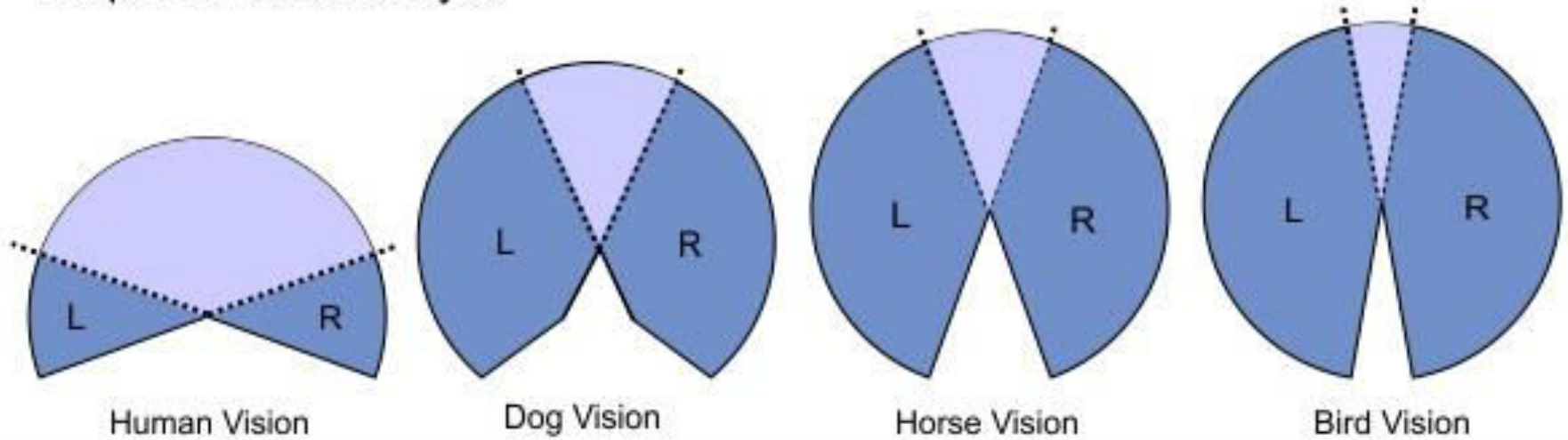
The diagram illustrates the visual fields of a human head, shown from a top-down perspective. The head is at the bottom center. Three overlapping semi-circular areas represent the visual fields: a green area on the left, a blue area on the right, and a larger cyan area in the center. The cyan area is labeled 'Binocular visual field'. The green area is labeled 'Visual field of the left eye' and the blue area is labeled 'Visual field of the right eye'. Inside the cyan area, there are several faint illustrations of people in various poses. At the bottom center, below the head, there are three concentric arcs with arrows indicating angles of 10°, 20°, and 30°.

**Binocular visual field**


**Visual field of the left eye**


**Visual field of the right eye**

## Peripheral vision of Eyes



Area:  Not Visible

 Visible to One Eye only

 Visible to both Eyes

